



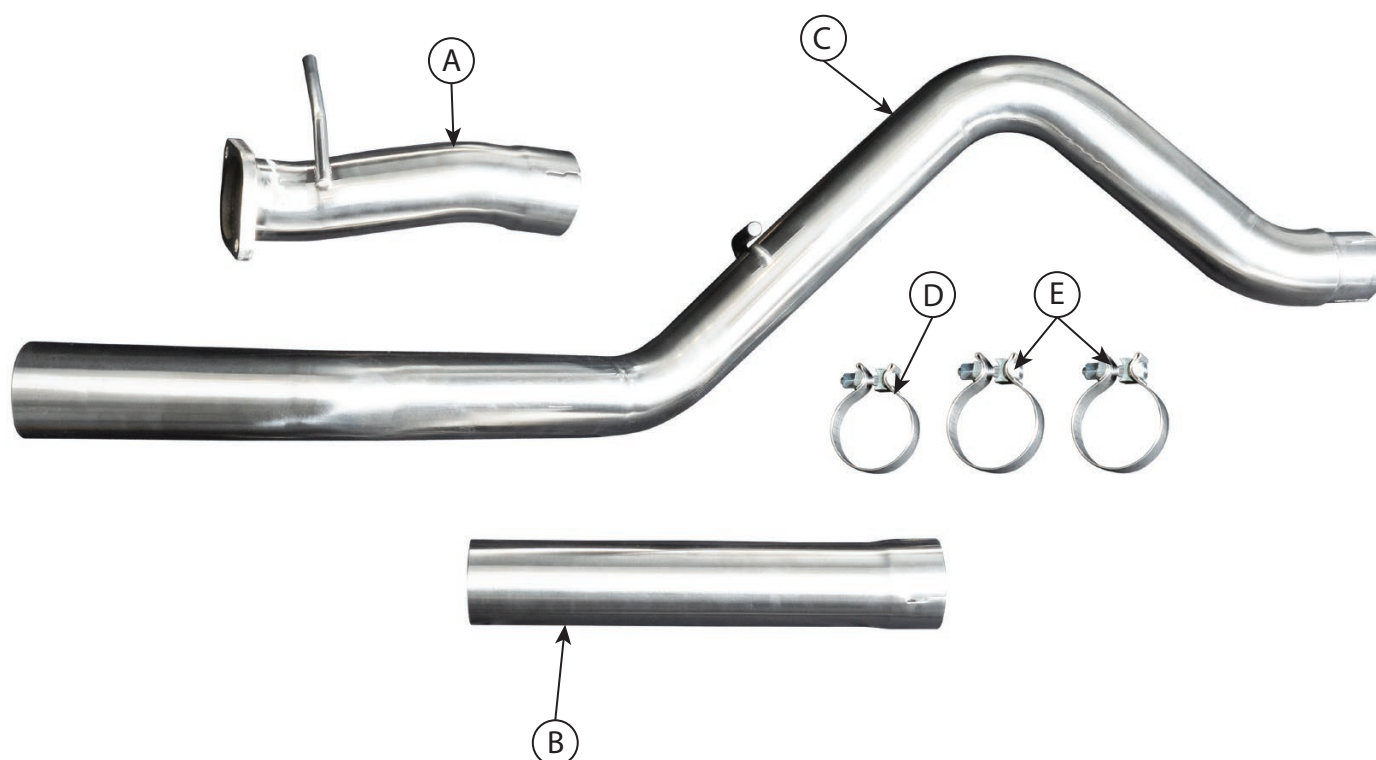
STAINLESS STEEL EXHAUST SYSTEM

Part Number: SES9300MP

Installation Instructions

YEAR	MAKE	MODEL	ENGINE
2021-2024	FORD	BRONCO (2DR & 4DR)	L4-2.3L TURBO
2021-2024	FORD	BRONCO (2DR & 4DR)	V6-2.7L TWIN TURBO

PARTS INCLUDED



ITEM	QTY	PART NO.	DESCRIPTION
A	1	W-SES9300-1	Front pipe
B	1	W-SES9300-2	Mid pipe extension (Used on 4 door models only)
C	1	W-SES9300-3	Mid pipe
D	1	X-17202	66mm AS Band clamp SUS304
E	2	X-4015	76mm SS Slip fit torsion clamp

TOOLS REQUIRED

Ratcheting Wrench

10mm socket

15mm socket

BEFORE YOU BEGIN

Please check the list of parts included and report any defective or missing parts to the authorized Injen dealer you purchased this product from. Before installing any parts of this system, please read the instructions thoroughly. If you have any questions regarding installation, please contact your Injen Technology dealer. Installation DOES require some mechanical skills. A qualified mechanic is always recommended.

This product includes a Limited Lifetime Warranty to the original purchaser against defects in material and workmanship on all Injen exhaust systems. Any and all warranty coverage is limited to the repair or replacement of the defective part only, at Injen Technology's discretion. The warranty does not cover incidental or consequential damages, nor does it cover the cost of installation or removal of the defective part or its replacement. Proof of purchase is required.

Do not attempt to install the exhaust system while the engine is hot. Severe burn could result from touching hot engine components.

WARNING: Failure to follow installation instructions and not using the provided hardware may damage the exhaust system, engine, or components of either.

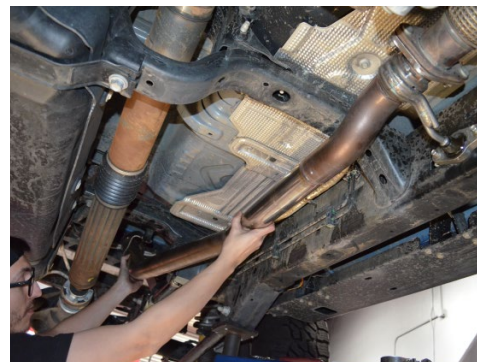
Note: It is always recommended to disconnect your battery before disconnecting any sensors.



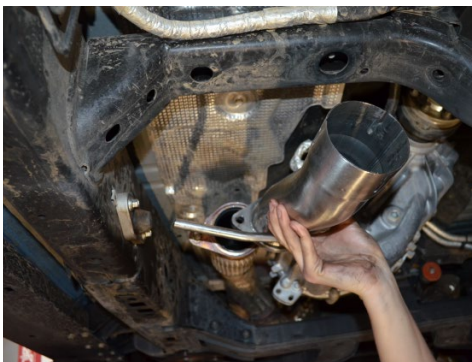
1. Remove the two nuts securing the mid pipe to the OEM flex pipe. Then detach the front hanger from the rubber insulator.



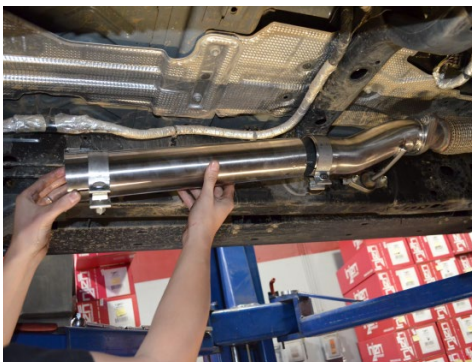
2. Detach the midpipe hanger from the rubber insulator.



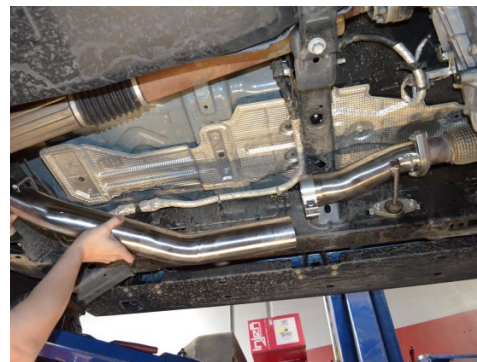
3. Remove the OEM mid pipe.



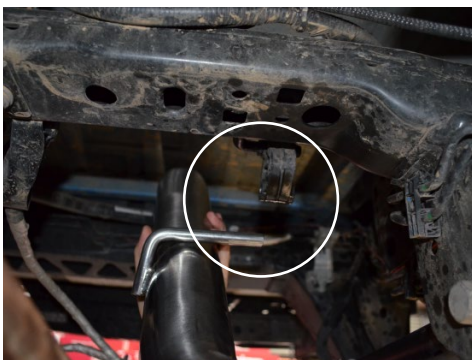
4. Connect the front pipe to the OEM flex pipe, then insert the hanger to the rubber insulator. Secure using the OEM fasteners.



5. **FOUR DOOR MODELS ONLY:** Attach the mid pipe extension to the front pipe. Secure using the provided 76mm clamps.



6. Connect the mid pipe to the front pipe. Secure using the provided 76mm clamps.



7. Insert the mid pipe hanger to the rubber insulator.



8. Connect the mid pipe to the OEM muffler and secure using the provided 66mm clamp.



9. Ensure all bolts and clamps are properly secured.

CONGRATULATIONS! You have just completed the installation of this exhaust system. Periodically, check the alignment of the exhaust, normal wear and tear can cause nuts and bolts to come loose. **Note: Check clearance and adjust if needed! Failure to check the alignment and adjust the exhaust can cause damage that will void the warranty. Injen Technology is not responsible for any damages caused by/from improper installation.**