



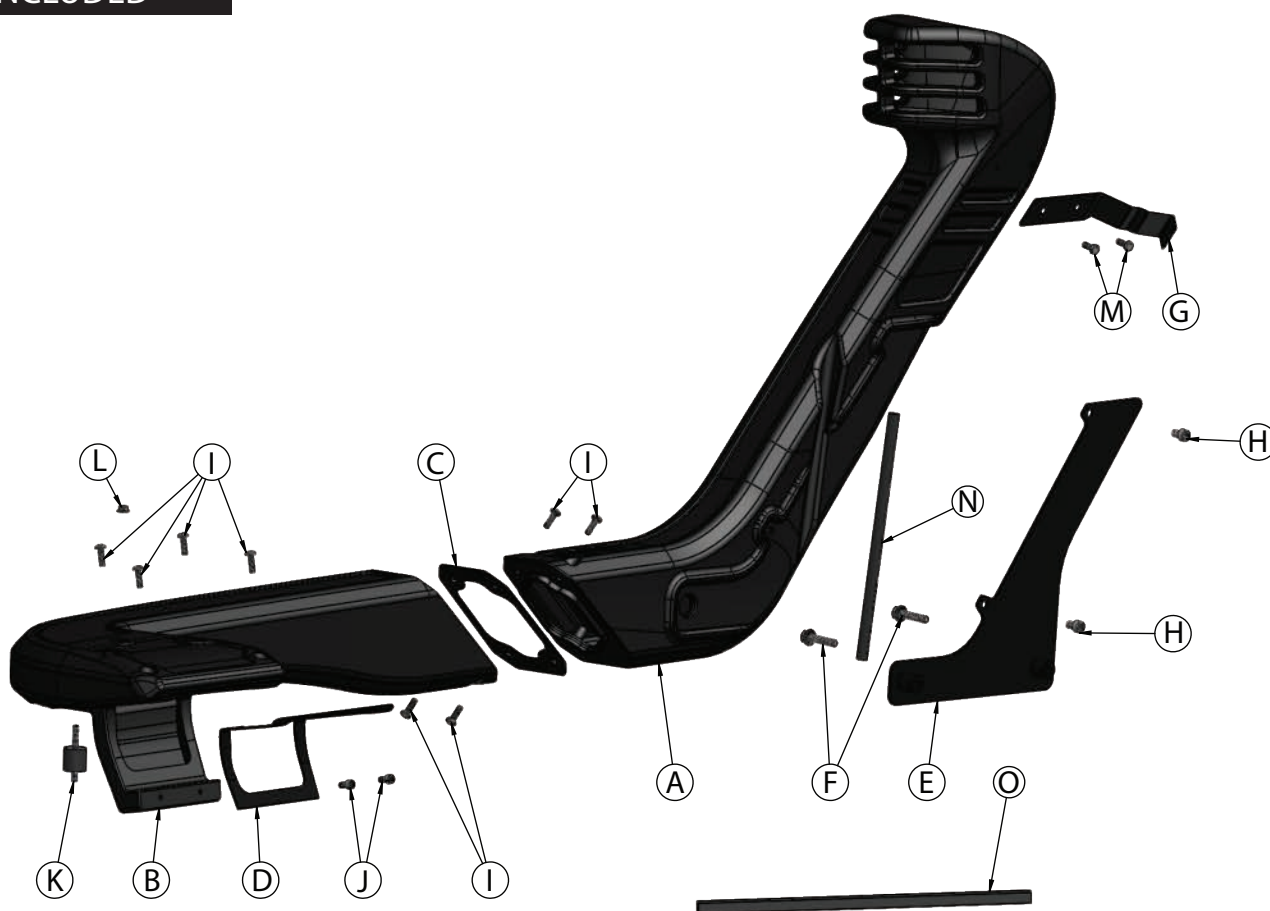
## EVOLUTION SERIES AIR INTAKE SYSTEM

Part Number: EVO15168

### Installation Instructions

YEAR	MAKE	MODEL	ENGINE
2018 - 2025	JEEP	WRANGLER (JL)	V6-3.6L
2019 - 2023	JEEP	WRANGLER (JL)	L4-2.0L TURBO
2018 - 2023	JEEP	WRANGLER (JL)	L4-2.0L TURBO HYBRID
2020 - 2025	JEEP	GLADIATOR (JT)	V6-3.6L

## PARTS INCLUDED



ITEM	QTY	PART NO.	DESCRIPTION
A	1	X-15168	JL/JT Snorkel upper
B	1	X-15161	JL/JT Snorkel lower
C	1	X-6140	JL/JT Lower to upper snorkel gasket
D	1	X-6139	JL/JT Airbox to lower snorkel gasket
E	1	X-20138	JL/JT Lower bracket
F	2	X-6068	M8 x 1.25mm x 40mm Hex bolt
G	1	X-20139	JL/JT Upper bracket
H	2	X-6076	M8 x 1.25mm x 12mm 18-8 Socket head bolt
I	8	X-6100	M6 x 1.0 x 20mm Pan head phillips bolt
J	2	X-6056	M6 x 1.0 x 12mm Zinc finish steel socket cap bolt
K	1	X-6029	M6 Vibra mount .50" male /1.00" male
L	1	X-6002	M6 x 1.0 Serrated flange locknut
M	2	X-6005	M6 x 1.0 x 16mm Hex head bolt
N	11"	X-3087	6mm Vacuum Hose SAE J30R6
O	15"	X-6101	Bulb trim

## RECOMMENDED TOOLS

Ratcheting Wrench

10mm Socket

8mm Nut Driver

2mm Allen Key

Needle Nose Pliers

Phillips Head Screwdriver

## BEFORE YOU BEGIN

Please check the list of parts included and report any defective or missing parts to the authorized Injen dealer you purchased this product from. Before installing any parts of this system, please read the instructions thoroughly. If you have any questions regarding installation, please contact your Injen Technology dealer. Installation DOES require some mechanical skills. A qualified mechanic is always recommended.

This product includes a Limited Lifetime Warranty to the original purchaser against defects in material and workmanship on all Injen intake systems excluding the filter element. Any and all warranty coverage is limited to the repair or replacement of the defective part only, at Injen Technology's discretion. The warranty does not cover incidental or consequential damages, nor does it cover the cost of installation or removal of the defective part or its replacement. Proof of purchase is required.

Do not attempt to install the intake system while the engine is hot. Severe burn could result from touching hot engine components. It is always recommended to disconnect your battery before disconnecting any sensors.

**WARNING:** Failure to follow installation instructions and not using the provided hardware may damage the intake system, engine, or components of either.

**CARB Note:** Injen intake systems are street legal in most states unless the state is adopting to California Emissions standards. States that have adopted California emission standards include: Arizona, California, Connecticut, District of Columbia, Maine, Maryland, Massachusetts, New Jersey, New Mexico, New York, Oregon, Pennsylvania, Rhode Island, Vermont, and Washington. These states will require a California Air Resource Board Executive Order Number (CARB E.O.) for the legal use of an Injen intake system in your vehicle for use on public roads or highways. Otherwise, the vehicle will be considered "Legal in California only for racing vehicles competition use only, which may never be used upon a public street or highway." Please keep your factory air intake system for any future on-road use.

**NOTE:** This optional Injen Intake snorkel is an accessory to Injen part numbers: EVO5005/EVO5006. **THE INJEN INTAKE PART NUMBERS: EVO5005/EVO5006 ARE NOT INCLUDED IN THIS KIT.** It is available separately. This snorkel will only work with Jeep Wrangler JL/JT Injen intake system part numbers: EVO5005/EVO5006. Injen does not recommend modifying or altering this snorkel to make it fit other applications.

**CAUTION:** Please use caution if using Injen's snorkel to submerge the vehicle under water. The consumer is responsible for completely sealing the Injen air box with a proper silicone to prevent the engine from ingesting water and hydro locking the engine. Injen Technology is not liable for any misuse or improper installation on this snorkel. Injen Technology HIGHLY RECOMMENDS THIS INTAKE SNORKEL BE INSTALLED BY A TRAINED PROFESSIONAL. This kit does require cutting, drilling and grinding of the factory hood. Improper installation could result in damage to body panels and components

## FILTER MAINTENANCE

SuperNano-Web Dry Air Filter (Blue Media)	8-Layer Oiled Cotton Gauze Air Filter (Red Media)
Do not use water or filter oil to clean!	Injen Technology's Oiled Filter Restore Kit (P/N: X-1030) is recommended for cleaning and maintenance.
You can use a vacuum cleaner or compressed air to clean.	Use the cleaning solution or water to wash out the filter element, then use Injen's Proprietary Filter Oil to re-oil the element. The amount of oil to use in grams is provided on the product page for the filter at <a href="https://injen.com">https://injen.com</a> . Let sit for 24 hrs for the oil to completely saturate the cotton gauze media.
If you're using a vacuum cleaner, follow the direction of the pleats on the outside of the filter element.	
If you're using compressed air, make sure it never exceeds 25 PSI. Use a blower from the inside of the element towards the outside, following the direction of the pleats.	





1. Remove the cold air intake.



2. Remove the air box bracket.



3. Drill out the two indents located on the back of the air box with a 9/32" drill bit.



4. (OPTIONAL) Clean the gasket mating surface on the air box with rubbing alcohol then attach the gasket to the air box. Refer to advisory on pg. 2



5. Bolt down the top of the lower snorkel using the provided four M6 phillips bolts.



6. Secure the lower portion of the snorkel inlet to the air box with the provided M6 socket cap bolts.



7. Attach the provided M6 vibra mount. The shorter end will be screwed into the chassis.



8. Reinstall the Injen intake and snorkel into the engine bay. Secure the snorkel to the vibra mount with the provided M6 nut



9. Remove the two OEM M8 torx bolts holding down the cowl panel.



10. Remove the factory antenna.



11. Bolt down the lower snorkel bracket using the two 40MM M8 bolts.

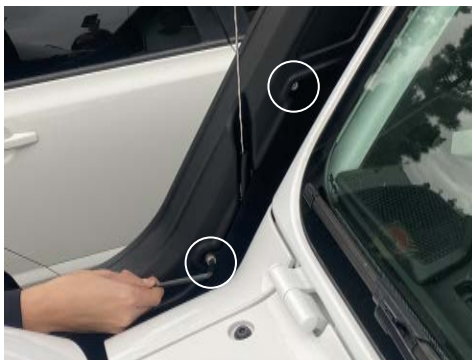


12. Slip the 6mm vacuum hose over the factory antenna then reinstall the antenna.





13. (OPTIONAL) Place the gasket on the lower snorkel. Refer to advisory on pg. 2



14. Bolt down the upper snorkel to the lower bracket using the provided M8 x 1.25 12mm bolts.



15. Secure the upper snorkel to the lower snorkel using four M6 phillips bolts



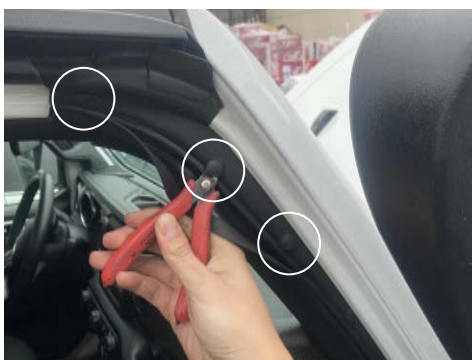
16. Remove the two bolts from the pillar grab handle.



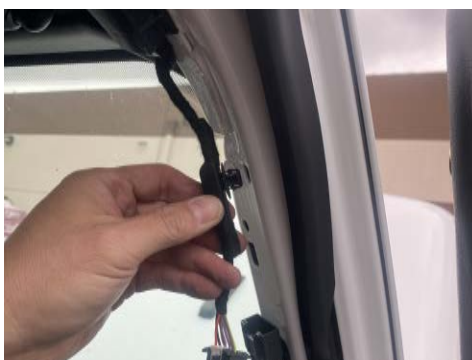
17. Unclip the speaker cover.



18. Pull firmly on the pillar grab handle to detach it from the pillar.



19. Pry off the top three push clips holding the door seal in place.



20. Unclip the harness behind the pillar grab handle.



21. Remove the tape from the wire organizer clip attached to the harness. This clip will no longer be used.



22. Line up the upper snorkel bracket with the top bolt on the pillar grab handle.



23. Reinstall the pillar grab handle with the upper bracket in place. Reinstall the speaker cover and door seal.



24. Bolt down the upper snorkel with the upper bracket using the two M6 x 1.0 x 16mm hex head bolts.



25. Tape the cutting template 3"(76.2mm) from the outer tangent point on the hood latch indentation. Then trace the template.



26. Use the traced line to cut the hood. Under cut the opening and repeatedly check clearance with the snorkel.



27. With a flat grinder clean up the edges and open up as needed for clearance.



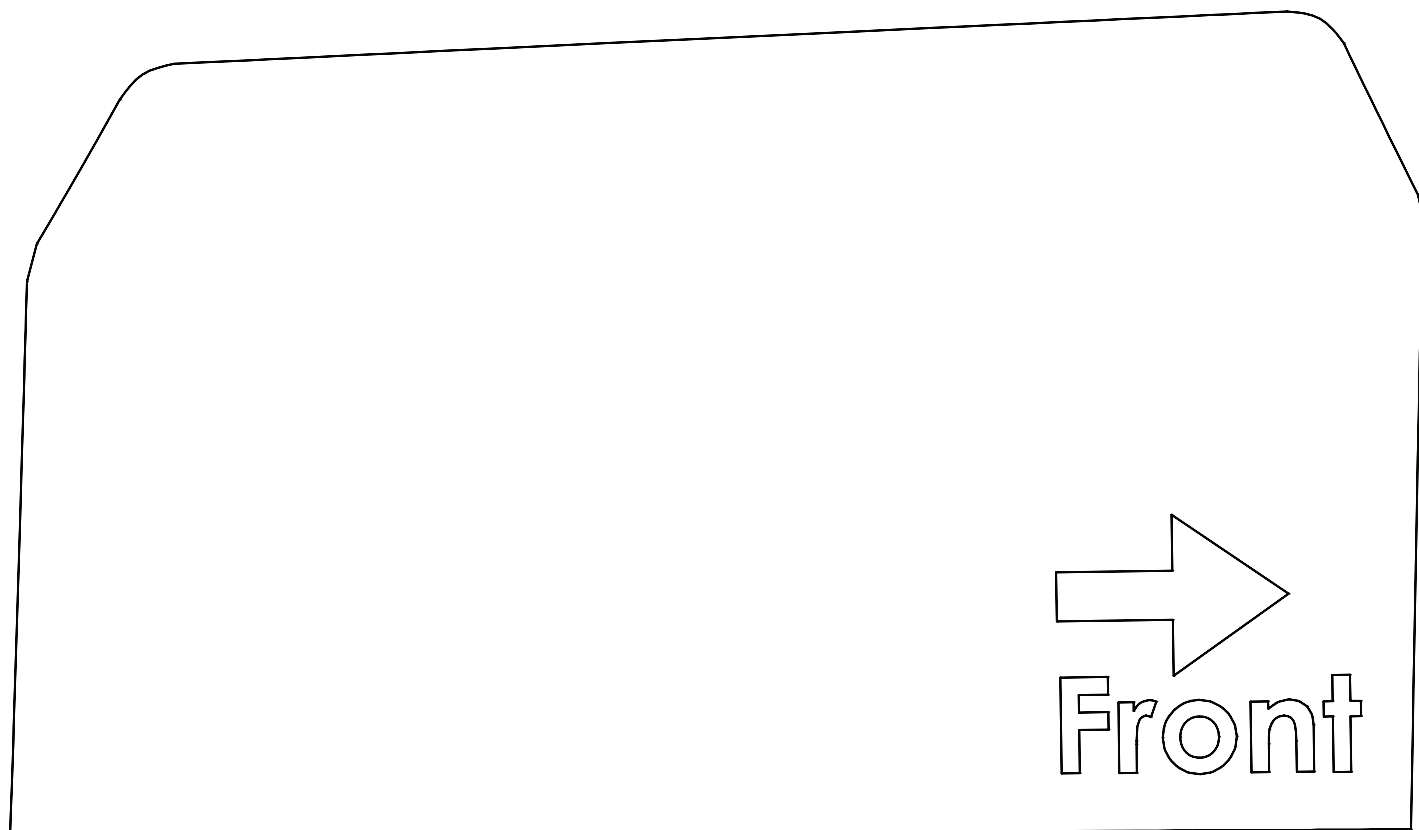
28. Place the bulb trim onto the edge of the cutout. Trim the bulb trim as needed.



29. Ensure that all bolts, nuts and clamps are properly secured.

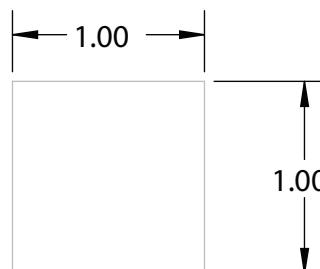
**CONGRATULATIONS!** You have just completed the installation of this intake system. Periodically, check the alignment of the intake, normal wear and tear can cause nuts and bolts to come loose. Note: Check clearance and adjust if needed! Failure to check the alignment and adjust the intake can cause damage that will void the warranty. Injen Technology is not responsible for any damages caused by/from improper installation.

**ATTENTION:** Print to actual size



Measure 3.00" from edge indicated by the photo on page 5 figure 25

**Perfect 1in. Square (25.4mm)  
Check Print Scale**



If print scale is not accurate contact,  
Injen Technology Tech support at:  
Office: (909) 839-0706  
FAX: (909)839-0427  
Email:Tech@injen.com