



**“The World’s First Tuned air Intake System!”**  
**Factory safe air/fuel ratio’s for Optimum performance**  
**Injens tuning process covered by three U.S. Patents**

**Part number PF1800**  
**2006-10 Mitsubishi Raider**  
**2005-10 Dodge Dakota**  
**4.7L V8**

- 1- MR Tech Power-Flow intake
- 1- 3 1/2" filter with inverted top(#1021)
- 1- 3 1/4" straight hose (#3045)
- 3/4"- 12mm Vacuum Hose (#3078)
- 1- m6 vibra-mount (#6020)
- 1- m6 flange nut (#6002)
- 1- Fender washer (#6010)
- 1- Diamond-plate power heat shield (#11037)
- 3- 5/16" flange bolts (#6019)
- 3- Composite heat shield brackets (#4010)
- 2- Power-bands #048 (#4004)
- 1- Instruction

**Note:**

**Changing the filter with another brand will change air/fuel ratio that can be damaging to your engine.**

**Note:** The C.A.R.B Exempt sticker must be attached under the hood in a manner such that it is easily viewed by an emissions inspector.

**Congratulations! You have just purchased the best engineered, dyno-proven cold air intake system available.**

**Please check the contents of this box immediately.**

Report any defective or missing parts to the Authorized Injen Technology dealer you purchased this product from.

Before installing any parts of this system, please read the instructions thoroughly. If you have any questions regarding installation please contact the dealer you purchased this product from.

Installation DOES require some mechanical skills. A qualified mechanic is always recommended.

\*Do not attempt to install the intake system while the engine is hot. The installation may require removal of radiator fluid line that may be hot.

Injen Technology offers a limited lifetime warranty to the original purchaser against defects in materials and workmanship. Warranty claims must be handled through the dealer from which the item was purchased.

Injen Technology 244 Pioneer Place Pomona, CA 91768 USA

**Please check the contents of this box immediately.**

**Note: This intake system was Dyno-tested with an Injen filter and Injen parts. The use of any other filter or part will void the warranty and CARB exemption number.**

Parts and accessories are available on line at “Injenonline.com”

**Warning: Manufactures attempting to duplicate Injen’s patented process will now face legal action.**

MR Technology Step down process:

- 1- Calibration Method for Air Intake Tracts for Internal Combustion Engines. Covered under Patent# 7,359,795
- 2- Calibration Device for Air Intake Tracts for Internal Combustion Engines. Published and patent pending
- 3- Calibration Method and Device for Air Intake Tracts having Air Fusion Inserts Published and patent pending

**Note: Injen strongly recommends that this system be installed by a professional mechanic.**



**Hydro-shield**  
**Part# X-1037**

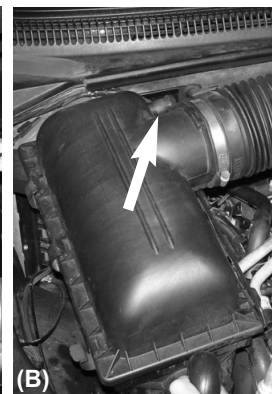


Figure 1 (A)

(B)

Disconnect the crank case vent hose from the air box cleaner port as shown above indicated by the arrow.

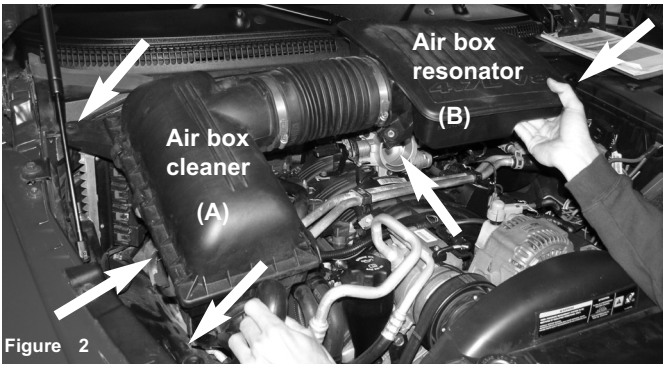


Figure 2  
 There are three mounting tabs located on the air box cleaner indicated by the arrows. Lift up on the air box cleaner to dislodge air box from grommet. (Figure A) Use a 10mm socket and ratchet to remove two 10mm bolts on the air box resonator to remove resonator from throttle body. (Figure B)

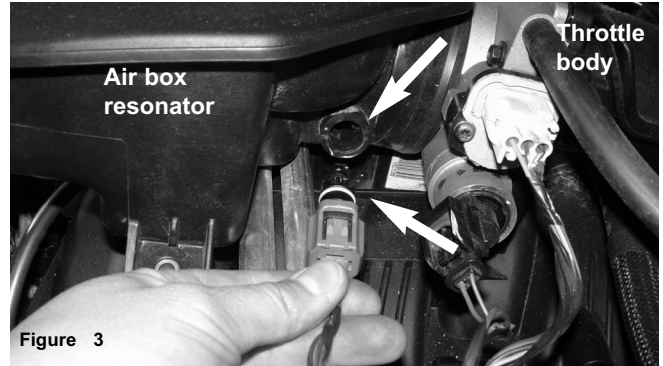


Figure 3  
 On the right side of the air box resonator, remove the air temp sensor in front of the throttle body indicated by the arrows



Figure 4  
 Press the 3 1/4" straight hose over the throttle body. Place two power bands over the straight hose, tighten only the clamp located over the throttle body side as shown above.



Figure 5  
 Remove the foam insulator located on the fender wall.



Figure 6  
 Screw the vibra mount on to the air box resonator mounting point located on the intake manifold.

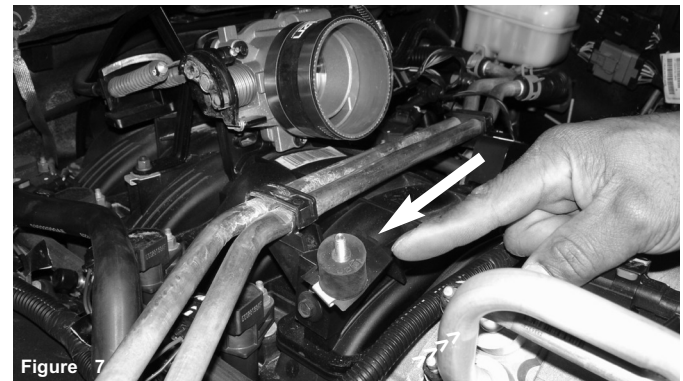


Figure 7  
 The vibra-mount is screwed in place until it has bottomed out.



Figure 8  
 The new intake is now aligned and the upper end is pressed into the throttle body hose. As the upper end of the intake is pressed into the throttle body hose, the intake bracket is aligned to the vibra-mount stud.  
 Page 2 of Part# PF1800

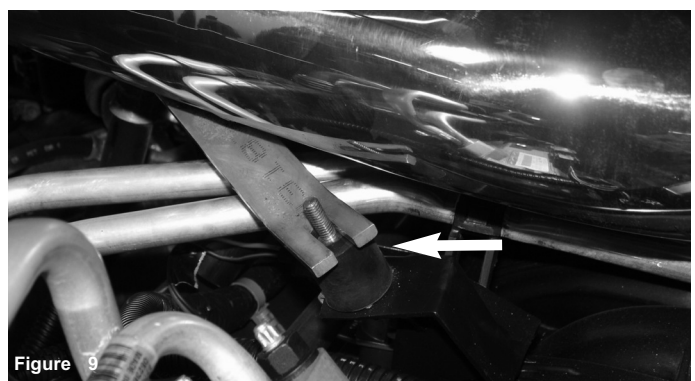


Figure 9  
 Close up of the bracket on the vibra mount as seen in figure 10

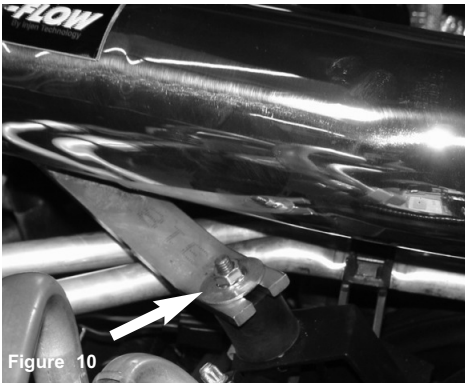


Figure 10

Use the m6 flange nut and fender washer to fasten the intake in place.



Figure 11

Take the 3/4" - 12mm sensor stub and press it into the 3/4" sensor port. The sensor stub will sit flush in the sensor port inner diameter.

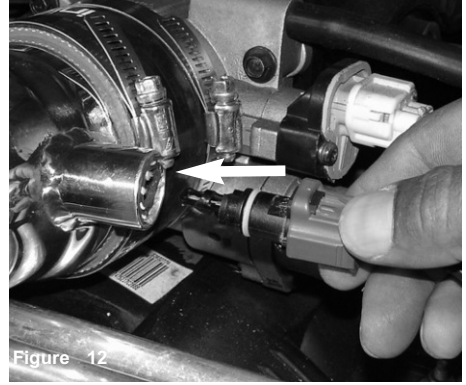


Figure 12

The 12mm sensor stub is now sitting flush in the sensor port and the air temperature sensor is now pressed into the 12mm sensor stub.

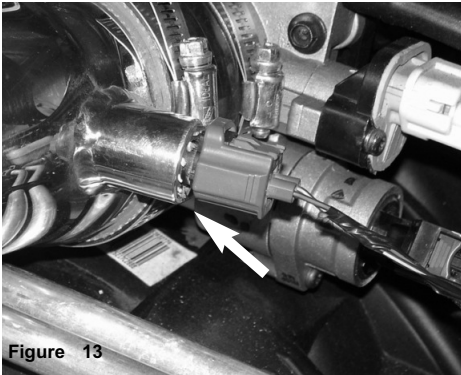


Figure 13

The air temperature sensor is now firmly pressed into the sensor stub.



Figure 14

The crank case vent hose is pressed over the long intake vacuum port.



Figure 15

The crank case vent hose has been installed over the intake vacuum port as shown above.

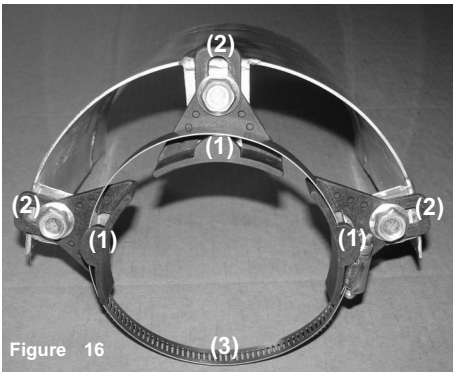


Figure 16

One by one, the composite brackets (1) are lined up to the heat shield tabs and a 5/16" flange bolt (2) is used to secure the bracket in place. The filter clamp is opened and set over the composite brackets (3).

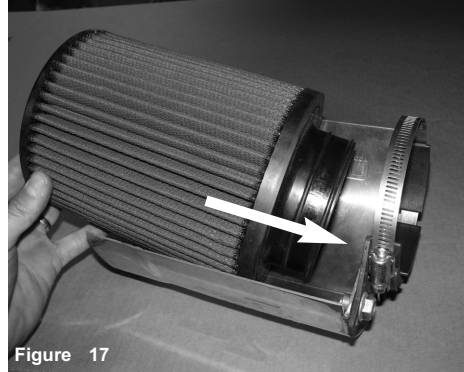


Figure 17

Take the filter and slip it into the metal clamp between the composite brackets.



Figure 18

Adjust the clamp so that it sit between the filter beads located on the filter neck.



Figure 19

With the filter clamp loose, press the entire filter assembly over the intake end as shown above.



Figure 20

The entire filter assembly is adjusted for the best possible fit. Once the heat shield and filter have been adjusted, continue to tighten the filter neck clamp.



Figure 21  
Align the entire intake assembly for the best possible fit. Once the intake, filter and heat shield have been adjusted and cleared from any moving parts, continue to tighten all nuts, bolts and clamps.



Figure 22  
Periodically, Check the fitment of the intake system. Check all lines, clamps, bolts and filter parts for any possible misalignment. The filter should also be checked and cleaned every 5000 to 7500 miles. Hydro-shields are also sold on-line that will help extend the life of your filter.

1. Upon completion of the installation, reconnect the negative battery terminal before you start the engine.
2. Align the entire intake system for the best possible fit. Once the intake has been properly fitted continue to tighten all nuts, bolts and clamps.
3. Periodically, recheck the alignment of the intake system and make sure there is proper clearance around and along the length of the intake. Failure to follow proper maintenance procedures may cause damage to the intake and will void the warranty.
4. Start the engine and listen carefully for any odd noises, rattles and/or air leaks prior to taking it for a test drive. If any problems arise go back and check the vacuum lines, hoses and clamps that maybe causing leaks or rattles and correct the problem.
5. Check the filter for excessive dirt build up. Clean or replace the filter with an original Injen filter (can be bought on-line at "injenonline.com"). Congratulations! You have just completed the installation of the best intake system sold on the market. Enjoy the added power and performance of your new intake system.