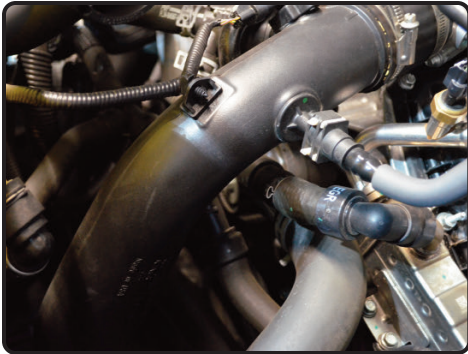
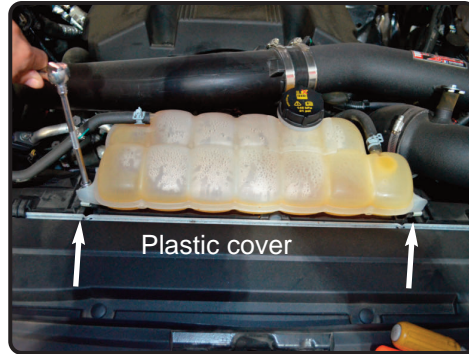


Instruction Manual P/N:SES9014ICPC



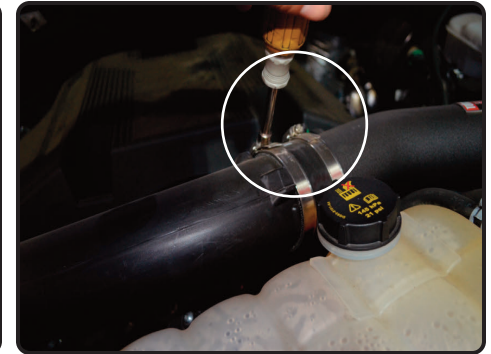
1. Stock Charge pipe shown. Disconnect the battery before removing any components.



2. Remove the 2 bolts holding in the coolant reservoir.



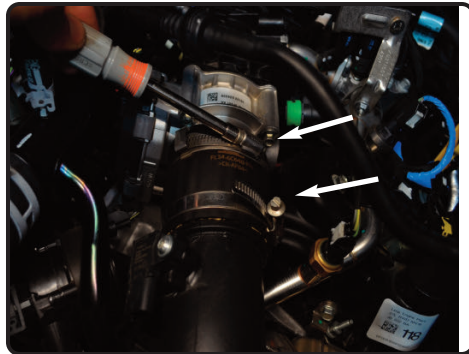
3. Carefully push aside the coolant reservoir.



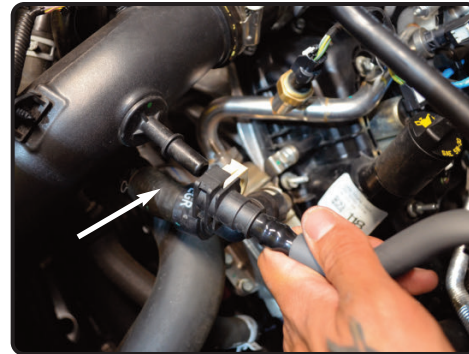
4. Loosen the clamp on the intake system and pull back.



5. Push aside the OEM turbo inlet pipe out of way allowing for clearance.



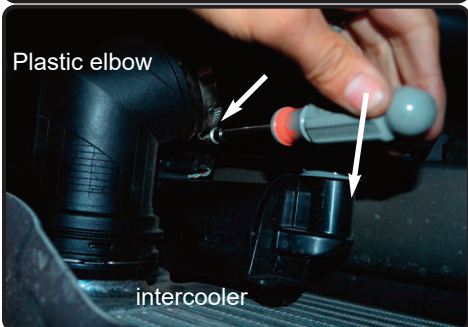
6. Loosen the clamp on the throttle body using 7mm nut driver.



7. Disengage the crankcase line then pull back the line from the fitting on the charge pipe.



8. Disconnect the temperature sensor harness. Pull back the line from the charge pipe.



9. Loosen the clamp on the lower part of the charge pipe.



10. Twist and turn, the diverter valve hard line then pull back.



11. With a flat head screwdriver, pull back the spring clip, once removed. pull back the plastic elbow from the intercooler.



12. Pull back the plastic elbow from the intercooler.

Instruction Manual P/N:SES9014ICPC



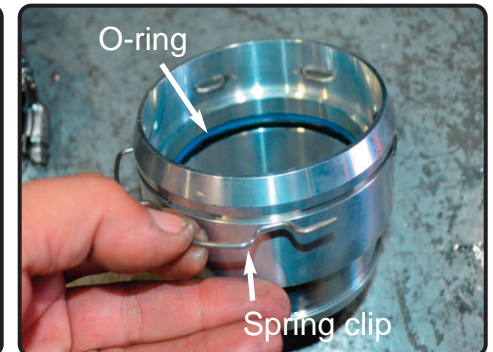
13. Remove the OEM charge pipe out of vehicle.



14. Using flat head screw driver remove the OEM o-ring from plastic elbow.



15. Remove the spring clip from plastic elbow.



16. Install the o-ring and the spring clip to the billet adapter.



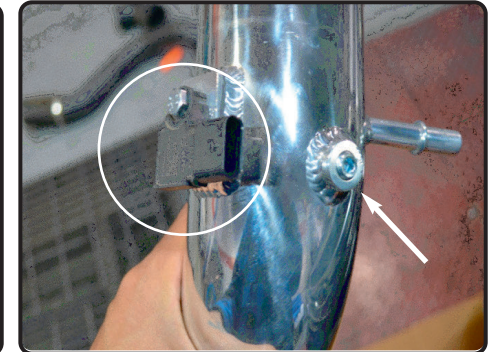
17. Install the 3.50" hump hose onto the adapter. Secure with the provided clamps.



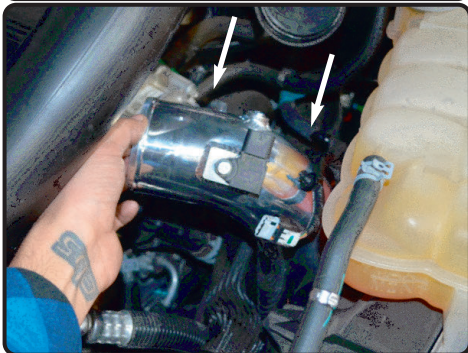
18. Attach the adaptor to the intercooler. Make sure you hear the click for the spring clips to be secured.



19. Remove the torx screw holding in the temperature sensor. Remove the sensor.



20. Install the temperature sensor to the injen charge pipe and secure using provided M6 hex screw. Install the provided 1/8" NPT plug onto the charge pipe.



21. Install the new charge pipe.



22. Install the 2.75" hump hose to the throttle body using provided clamps. Do not fully tighten yet.



23. Secure the vacuum line and reconnect temperature sensor harness.



24. Attach the bottom part of the charge pipe and tighten using 8mm nut driver. Reconnect the diverter valve hardline. Reinstall coolant reservoir and reconnect intake system. Ensure all clamps and bolts are secured.



Congratulations! You have just completed the installation of this charge pipe. Periodically, check the alignment of the charge pipe, normal wear and tear can cause nuts and bolts to come loose. **Note: Check clearance and adjust if needed! Failure to check the alignment and adjust the charge pipe can cause damage that will void the warranty. Injen Technology is not responsible for any damages caused by/from improper installation.**

Test Drive:

1. With the transmission in neutral or park and the parking brake engaged, start the engine. Listen for air leaks or odd noises. If air leaks are detected, secure hoses and connections. For any odd noises, inspect entire system for cause and adjust intake as needed. The Injen intake will function identically to the factory system but will be louder and more powerful.
2. Perform a road test. Listen for odd noises or rattles and fix as necessary.
3. If there are no issues, continue to enjoy your added performance from the Injen performance Intake kit.
4. Injen Technology recommends you periodically check clearance and adjust if needed! Failure to check the alignment and adjust the intake can cause damage that will void the warranty. Injen Technology is not responsible for any damages caused by/from improper installation.

1. Upon completion of the installation, reconnect the negative battery terminal before you start the engine.
2. Periodically, recheck the alignment of the charge pipe system and make sure there is proper clearance around and along the length of the charge pipe. Failure to follow proper maintenance procedures may cause damage to the charge pipe and will void the warranty.
3. Start the engine and listen carefully for any odd noises, rattles and/or air leaks prior to taking it for a test drive. If any problems arise go back and check the vacuum lines, hoses and clamps that maybe causing leaks or rattles and correct the problem.