

EXPLODED VIEW

Item	QTY.	P/N	Discription				
A	1	15105	air box	I	2	4005	#56 clamps
B	1	15108	tube (07-08)	J	4	4006	#64 clamps
C	1	15106	plenum	K	1	8055	1/8" NPT fitting - 3/8" OD fitting
D	1	1101	air filter	L	1	3091	8mm hose @8.5"
E	1	15139	clear window	M	4	6100	M6x20mm screws
F	1	3250	4" hump hose	N	4	8047	rubberized washers
G	1	3036	3.75" straight hose	O	2	6109	Self retaining lock washers
H	1	3129	4" straight hose	P	1	6111	Filter Monitor Plug

Report any defective or missing parts to the authorized Injen dealer you purchased this product from. Before installing any parts of this system, please read the instructions thoroughly. If you have any questions regarding installation, please contact your Injen Technology dealer. Installation DOES require some mechanical skills. A qualified mechanic is always recommended.

A Limited Lifetime Warranty to the original purchaser against defects in material and workmanship on all Injen intake systems excluding the filter element. Any and all warranty coverage is limited to the repair or replacement of the defective part only, at Injen Technology's discretion. The warranty does not cover incidental or consequential damages, nor does it cover the cost of installation or removal of the defective part or its replacement. Proof of purchase is required.

Vehicle Applications:

Make: Cadillac
Model: Escalade, Escalade EXT, Escalade ESV
Year: 2007-2008
Engine: 6.2L V8

Make: Chevrolet
Model: Avalanche
Year: 2007-2008
Engine: 5.3L, 6.0L V8

Model: Silverado
Year: 2007-2008
Engine: 4.8L, 5.3L, 6.0L V8

Model: Suburban
Year: 2007-2008
Engine: 5.3L, 6.0L V8

Model: Tahoe
Year: 2007-2008
Engine: 4.8L, 5.3L V8

Make: GMC
Model: Sierra 1500
Year: 2007-2008
Engine: 4.8L, 5.3L, 6.0L V8

Model: Sierra 1500 Denali
Year: 2007-2008
Engine: 6.2L V8

Model: Yukon
Year: 2007-2008
Engine: 4.8L, 5.3L, 6.0L V8

Model: Yukon XL
Year: 2007-2008
Engine: 5.3L, 6.0L V8

Model: Yukon Denali, Yukon XL Denali
Year: 2007-2008
Engine: 6.2L V8

IMPORTANT:

The following vehicles are excluded from this Executive order number. Look for the following engine test group numbers listed below.

The following vehicles will not be CARB exempt:

2007 Silverado/Sierra Hybrid SULEV Engine test group number - 7GMXT05.33386

Note:

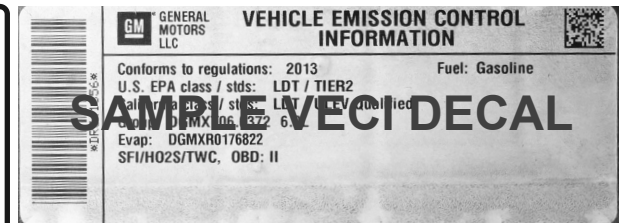
Vehicles excluded from this Executive Order Number are not legal for sale or for use on any vehicle registered with the California Department of Motor Vehicle and any other state adopting to California emissions standards. The use of this device on public streets or highways is strictly pro-hibited on vehicles in California and others states that have adopted California emission regulations. Legal in California for use on race vehicles only.

Note:

The C.A.R.B. Exempt sticker must be attached under the hood in a manner that is easily viewed by an emissions inspector.

Vehicle Emission Control Information:

If your OE air box has a Vehicle Emission Control Information decal affixed to it, removing your OE air box will also remove the Vehicle Emission Control Information decal. A visible VEI decal must be visible in the engine compartment to be CARB compliant. The VEI decal must be affixed to a component that is not easily removable. You can purchase a replacement VEI decal from your local dealership. Failure to have a visible Vehicle Emissions Control information decal will prevent the vehicle from passing a smog test. Sample Vehicle Emission Control Information decal shown



Instruction Manual P/N:EVO7101

NOTE: This intake kit may not work on vehicles with the following aftermarket modifications.

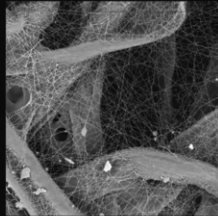
- Aftermarket Intercooler piping
- Aftermarket intercooler
- Turbo upgrade
- Modified body panels
- Suspension & Chassis modifications

The SuperNano-Web filter media is a dry synthetic media that outperforms the competition. The media itself is a proprietary base blend of synthetics and cellulose. Cellulose fibers are larger than synthetic fibers, and have larger spaces between the fibers, causing contaminants to load in the depth of the media and plug the airflow path. This creates higher restriction levels and less capacity. The synthetic fibers in the SuperNano-Web media are submicron in diameter and have small interior fiber spaces, which result in more contaminants being captured on the surface of the media. This can help keep restriction levels low as the filter loads with dirt and containments

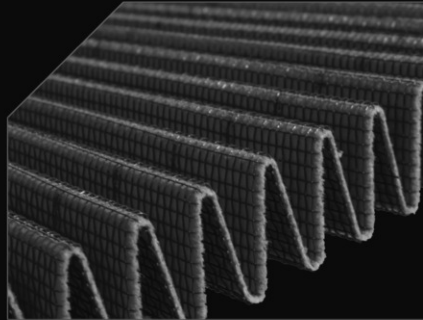
injen
TECHNOLOGY



Existing media without
Injen SuperNano-Web Technology



Superior Injen
SuperNano-Web Technology



A New Generation of Filters
Designed to perform and
filter like no other

INJEN SuperNano-Web Technology

If you look at the picture to the left, you can see the Nano-fiber web on top of our base media. That web, or SuperNano-Web as we like to call it, helps trap smaller particles and protect your engine.

To Clean your filter:

Carefully remove the filter from the housing. Once removed, wipe down the housing using a clean shop towel, being careful not to knock any dirt and/or debris in the air inlet. Your filters can be cleaned by carefully vacuuming the filter media from the dirty side, or by holding the filter with one hand and carefully blowing the filter media at a 45-degree angle from the clean side using low-pressure shop air (15-20 lbs. psi).

***IT IS IMPORTANT TO NOT USE ANY CLEANERS
ON THE SUPERNANO-WEB MEDIA OR APPLY ANY
OIL!!!**

NOTE: DISCONNECT BATTERY BEFORE INSTALLATION!!!

Instruction Manual P/N:EVO7101



1. Stock intake system shown.



2. Pull the engine cover off the intake manifold.



3. Use a 8mm nut driver and loosen the clamp on the intake air duct from the air box assembly and clamp on throttle body.



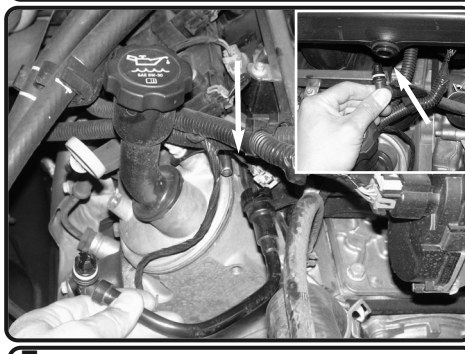
4. Unplug the the harness off the MAF sensor.



5. Loosen the clamp using 8mm nut driver. Remove the MAF sensor from air box. Remove the factory coupler from MAF sensor.



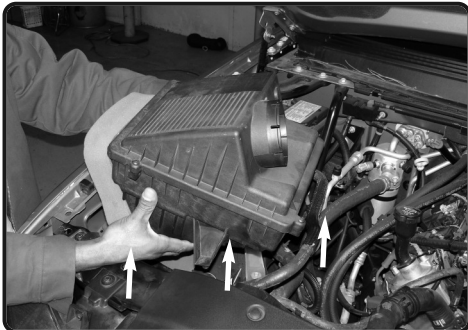
6. Unclip the coolant lines underneath the air duct from the tab



7. Disconnect the crank case ventilation line from the air duct resonator section located on top of the intake manifold. You will need to unclip a plastic lock in order for you to remove this line from the valve cover.



8. You may now remove the entire air duct



9. Remove the entire air box assembly



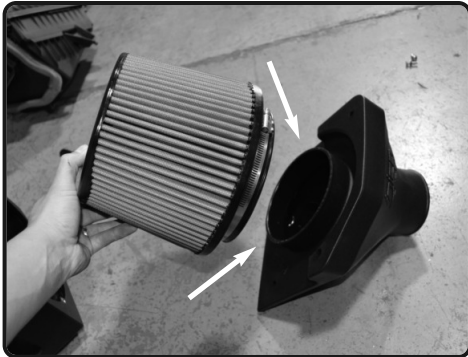
10. Remove the grommet spacer from the factory air box.



11. Now install the grommet spacer into the new injen air box and secure.



12. Push the Filter Monitor Plug into the Filter Monitor pod on the Injen air box if you are not using the Filter Monitor Kit P/N AC1000



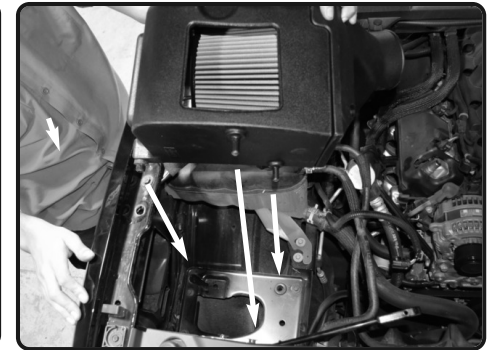
13. Install the filter to the plenum, secure and tighten using 8mm nut driver.



14. Now secure the plenum using pro-vided 4 M6 screws and rubberized wash-ers. Secure and tighten.



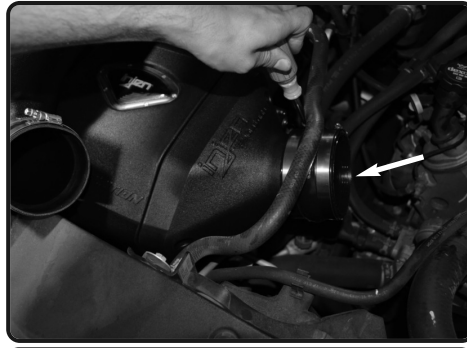
15. Install the the 4" and 3.75" straight hoses to the tube with clamps provided.



16. Now install the air box assembly into the vehicle. Position the tabs to seat like OEM box.



17. Air box assembly in place.



18. Install the 4" hump hose to the plenum. Tighten clamp on plenum only.



19. Install the MAF sensor to the hump hose. ***Make sure Arrow on sensor is going in direction towards the throttle body.***



20. Install the intake tube. Position for best fit, secure and tighten all clamps using 8mm nut driver.



21. Re-connect the MAF sensor harness.



22. Install the provided 8mm hose to the crank case vent tube on engine, and connect the other end to the fitting on the intake tube.



Congratulations! You have just completed the installation of this intake system. Periodically, check the alignment of the intake, normal wear and tear can cause nuts and bolts to come loose. **Note: Check clearance and adjust if needed! Failure to check the alignment and adjust the intake can cause damage that will void the warranty. Injen Technology is not responsible for any damages caused by/from improper installation.**

Test Drive:

1. With the transmission in neutral or park and the parking brake engaged, start the engine. Listen for air leaks or odd noises. If air leaks are detected, secure hoses and connections. For any odd noises, inspect entire system for cause and adjust intake as needed. The Injen intake will function identically to the factory system but will be louder and more powerful.
2. Perform a road test. Listen for odd noises or rattles and fix as necessary.
3. If there are no issues, continue to enjoy your added performance from the Injen performance Intake kit.
4. Injen Technology recommends you periodically check clearance and adjust if needed! Failure to check the alignment and adjust the intake can cause damage that will void the warranty. Injen Technology is not responsible for any damages caused by/from improper installation.

1. Upon completion of the installation, reconnect the negative battery terminal before you start the engine.
 2. Align the entire intake system for the best possible fit. Once the intake has been properly fitted continue to tighten all nuts, bolts and clamps.
 3. Periodically, recheck the alignment of the intake system and make sure there is proper clearance around and along the length of the intake. Failure to follow proper maintenance procedures may cause damage to the intake and will void the warranty.
 4. Start the engine and listen carefully for any odd noises, rattles and/or air leaks prior to taking it for a test drive. If any problems arise go back and check the vacuum lines, hoses and clamps that maybe causing leaks or rattles and correct the problem.
 5. Check the filter for excessive dirt build up. Clean or replace the filter with an original Injen filter (can be bought on-line at "injenonline.com").
- Congratulations! You have just completed the installation of the best intake system sold on the market. Enjoy the added power and performance of your new intake system.