



Part number RD1110 (E46)  
 1999-00 BMW 323i 2.5L  
 1999-00 BMW 328i 2.8L  
 2001 BMW 325i 2.5L  
 6 cylinder

- 1- 2 piece Injen intake (CA)
- 1- 3.00" Small Injen filter (#1017)
- 1- Steel heat shield (#11019)
- 1- 7 1/2" black vinyl trim (#6023)
- 1- 3" straight hose (#3044)
- 2- 3 1/8" straight hose (#3054)
- 6- Power-Bands (.362)(.048) (#4004)
- 1- 3" 8mm vacuum hose (#3091)
- 1- m6 vibra-mount (#6020)
- 3- m6 flange nut (#6002)
- 1- fender washer (#6010)
- 1- m5 x m20 bolt (#6024)
- 1- wire tie (#8001)
- 1- instruction

**Note:** This intake system is made to fit cars equipped with or with-out Zenon headlights.

**Congratulations! You have just purchased the best engineered, dyno-proven cold air intake system available.**

**Please check the contents of this box immediately.**

Report any defective or missing parts to the Authorized Injen Technology dealer you purchased this product from.

Before installing any parts of this system, please read the instructions thoroughly. If you have any questions regarding installation please contact the dealer you purchased this product from.

Installation DOES require some mechanical skills. A qualified mechanic is always recommended.

\*Do not attempt to install the intake system while the engine is hot.

The installation may require removal of radiator fluid line that may be hot.

Injen Technology offers a limited lifetime warranty to the original purchaser against defects in materials and workmanship. Warranty claims must be handled through the dealer from which the item was purchased.

Injen Technology 244 Pioneer Place Pomona, CA 91768 USA Please

**Please check the contents of this box immediately**

**Note: This intake system was Dyno-tested with an Injen filter and Injen parts the use of any other filter or part will void the warranty and CARB exemption number.**

Shop on line at [injenonline.com](http://injenonline.com) for replacement parts and accessories.



Figure 1

Now available, Hydro Shield by Injen  
 Part Number X-1035



Hydro Shield Sold Separately





Figure 2



Figure 3

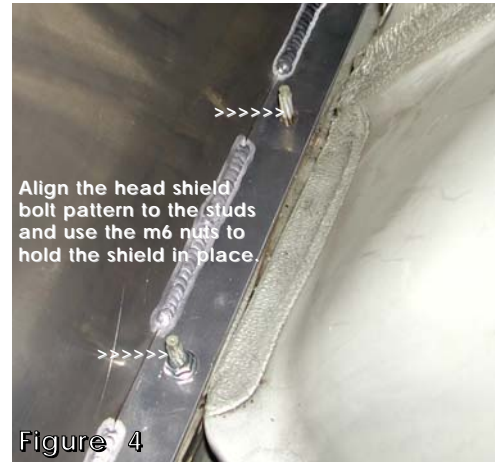


Figure 4

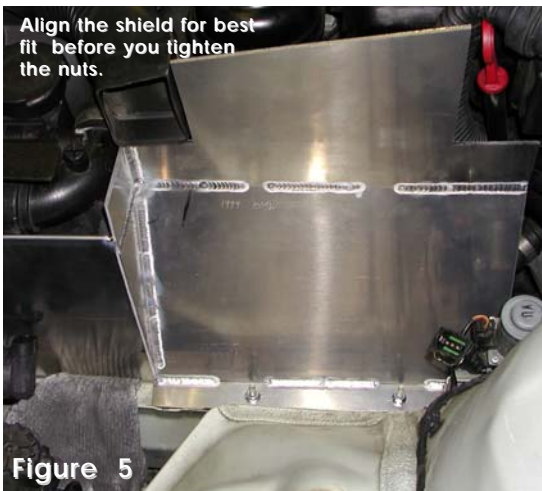


Figure 5

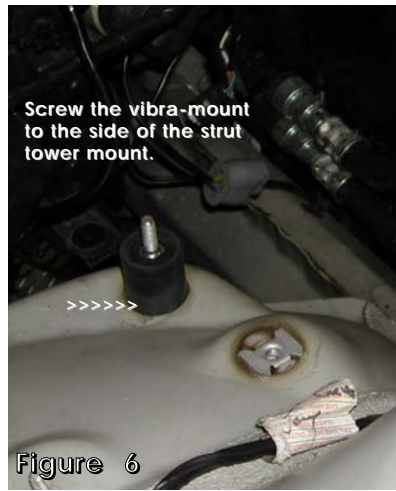


Figure 6



Figure 7



Figure 8



Figure 9



Figure 10

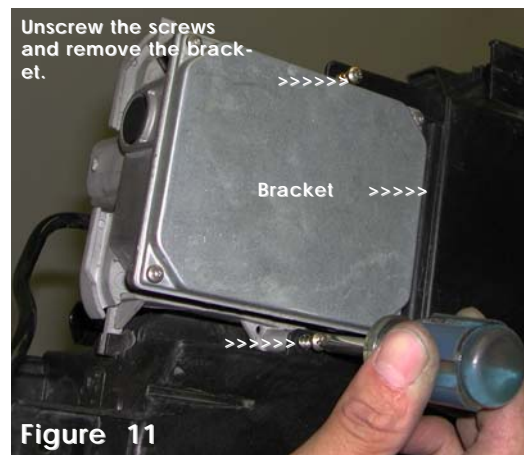


Figure 11

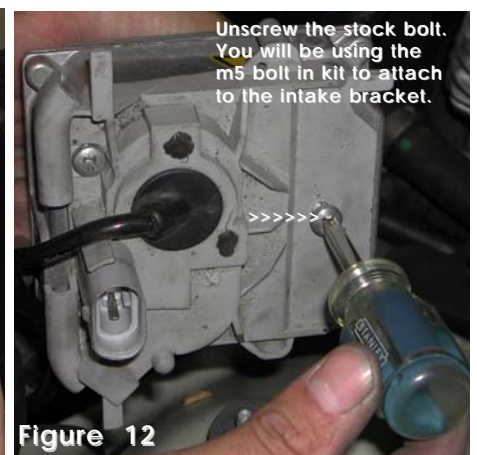


Figure 12





**Note: Please disconnect the negative battery terminal before starting this installation.**

1. Remove the stock intake box and intake duct leading to the throttle body. Unplug the vacuum hose from the intake duct and remove the mass air flow sensor from the air box. (See fig. 2)
2. Remove the straight rubber cover enclosing the two studs. (See fig. 3)
3. Take the heat shield and align the pre-drilled holes to the two studs use the two m6 nuts in this kit to secure the heat shield. (See figs. 4 and 5) Press the vinyl trim on the top edge of the shield.
4. Screw the vibra-mount into one of the tapped holes located on the strut tower mount. (See fig. 6)
5. Take the mass air flow sensor, four clamps and two 3 1/8" straight hose and assembled them as follows. Press the 3 1/8" straight hose over each end of the mass air sensor put slip two clamps on each side of the hose and tighten the clamp on the mass air sensor at this time. (See fig. 7) You can also slip one of the 3 1/8" hose over the swaged end of the secondary intake. The installation may be easier to some people.
6. Take the primary intake and 3.00" straight hose and press the hose over the 3.00" end of the intake slip two clamps on the hose and tighten the clamp on the intake at this point. (See fig. 8)
7. Press the 3.00" hose on the primary intake over the throttle body. Align the intake and semi-tighten the clamp on the throttle body side. (See fig. 9) Press the 3"-8mm hose over the 3/8" nipple on the intake. Press the hard vacuum hose by the firewall into the 8mm hose placed on the 3/8" nipple. (See fig. 9)
8. Press the assembled mass air flow sensor with the 3 1/8" hose over the primary intake. Align mass air sensor and semi-tighten the second clamp on the primary intake. (See fig. 9)
9. Remove the driver side head lamp and detach the clip joining the front head lamp frame to the side fender. (See fig. 10)
10. Unscrew the bolt holding the light ballast to the head lamp. (See fig. 11) Remove the stock m5 bolt on the ballast and use the m5 x m20 bolt in this kit to attach the ballast to the bracket on the secondary intake. (See figs. 12 and 13) Follow the next step to attach the ballast.
11. Take the secondary intake and filter, press the filter over the 3" end of the secondary intake and fasten the clamp on the filter tight. Gently slip the filter end into the head lamp cavity and attach the lamp ballast to the bracket on the intake use the m5 x m20 bolt. (See figs. 14 and 15)
12. Press the secondary intake with the ballast into the 3 1/8" hose on the mass air sensor. Align the bracket on the intake to the vibra-mount stud and use the m6 nut and fender washer to secure the entire assembly. (See fig. 16)
13. Align the entire cold air intake for best fit. when proper clearance has been made continue to tighten all nuts, bolts and clamps. (See fig. 1)
14. Replace the front head lamp to its stock location, connect the harness clip to the mass air flow sensor and reconnect the negative battery terminal
15. Remove all tools and rags from the engine compartment prior to starting the engine.
16. Congratulations! You have just completed the installation.